



Show Poultry Health Symposium

In collaboration with Aviomed



Dr Ockert Botha (BVSc)

Specializing in the development of Avian, Pigeon and Show Poultry Vitamins and Medicines, in collaboration with Aviomed

Is proud to sponsor the first SA Show Poultry Health Symposium.

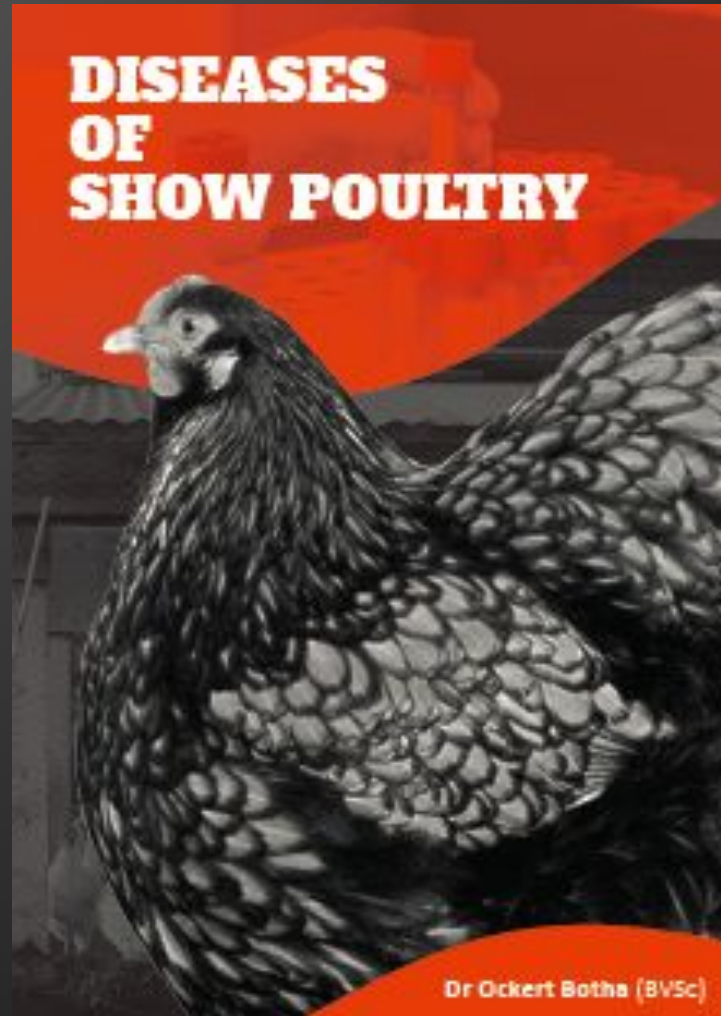
We are also extremely excited to launch Dr Botha's range of compounded Show Poultry medicines.



Dr Ockert Botha (BVSc)



Interactive session questions



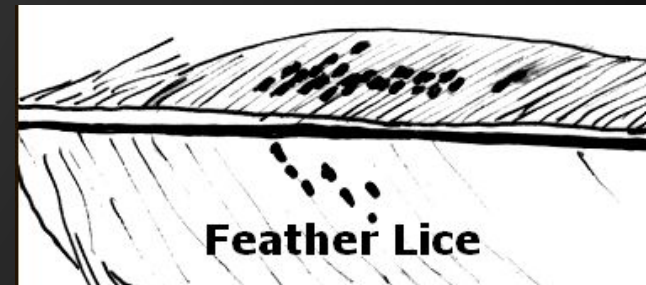
What will we be discussing?

Index	
	Page
<i>External Parasites</i>	1-4
Feather lice	1
Pigeon fly (Jockey)	2
Red Mite	3
Nasal and Tracheal Mites	4
<i>Internal Parasites</i>	4-8
Roundworms	5-6
Hairworms	7
Tapeworms	8
<i>Protozoal Diseases</i>	8-9
<u>Coccidiosis</u>	8-9
<i>Bacterial Diseases</i>	9-17
Paratyphoid	9-11
E. Coli (<u>Colibacillosis</u>)	11-12
Ulcerative Enteritis	12-13
<i>Respiratory diseases</i>	
<u>Ornithosis</u> (One Eye Cold)	13-14
<u>Mycoplasmosis</u> (Slime in the throat)	14-16
<u>Orniplasmosis</u>	16-17
<i>Nutritional Diseases</i>	18
Calcium Deficiency	18



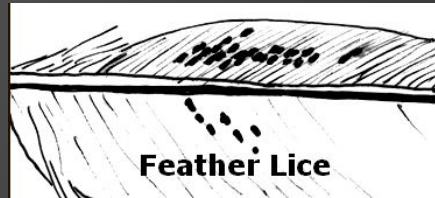
Diseases of show Poultry

- **Cause**
- Mallophaga species
-
- **Symptoms**
- Small black lice can be seen on feathers next to shaft
- Constant feather preening
- Mites do not cause any disease but is a sign of poor husbandry
-
- **Transmission**
- Direct contact from chicken to chicken
- From hens to chicks
-
- **Diagnosis**
- Visual examination of feathers - may need to use magnifying glass.
-
- **Prevention**
- Regular dipping or spraying
- Prevent introduction of new chickens before treating
-
- **Treatments available**
- Senticide Concentrate Spray (Pyrethrin or Pyrethroid sprays)
- Karbadust
-
- **Recommended treatment**
- Spray all pigeons in loft every 8 weeks with Senticide Spray.
-
-
-
-



External Parasites

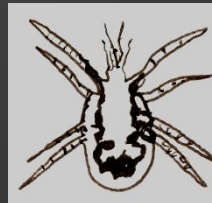
- Feather Lice



- Pigeon fly (Jockey)



- Red mite



- Scaly - Leg Mite



External parasites chickens



Pigeon Fly



Adult Pigeon Fly



White Prepupa



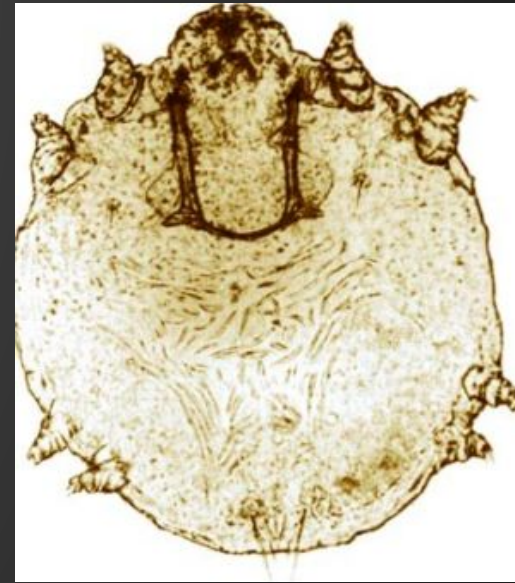
Red Mite



Treatment



Scaly Legg Mites



Treatment



What causes the little holes in the primary feathers of pigeons?



Pigeon Fly



Adult Pigeon Fly

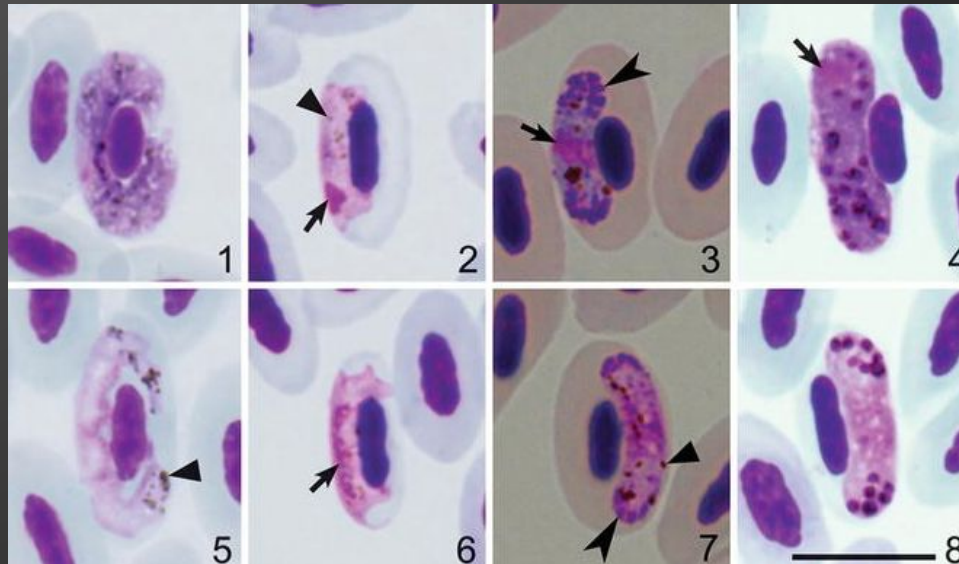


White Prepupa



What disease does the pigeon fly transmit

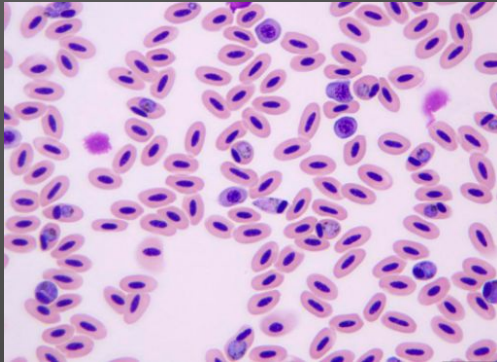
Pigeon Malaria



Asymptomatic Infections



Symptoms of Chicken Malaria





How to Control Mosquitoes on the Farm

Barn Talk



Internal parasites



Treatment of Internal Parasites



Dewormers added to drinking water is effective to use

TRUE or **FALSE?**



For use in Show Poultry only. Not for resale

Dr Botha's InFeedWormer-P

Compounded Veterinary Product

As an In feed treatment of Roundworm (Ascaris),
Hairworm (Capilaria) and Tapeworm (Cestodes)
in Show Poultry



500g

Directions for use

1. Mix 100g of Dr Botha's InFeedWormer-P thoroughly with 500ml of water
2. Leave to stand for 5 minutes and mix well again to form a smooth gel
3. Mix the entire contents of the gel evenly with 10 kg of Chicken Meal or Seed
4. Leave to stand for 20 minutes
5. Manually break up the clumps that have formed and then feed. Medicated food should be fed in the morning and the afternoon
6. Feed the same amount of medicated food that is normally fed to the flock

Storage

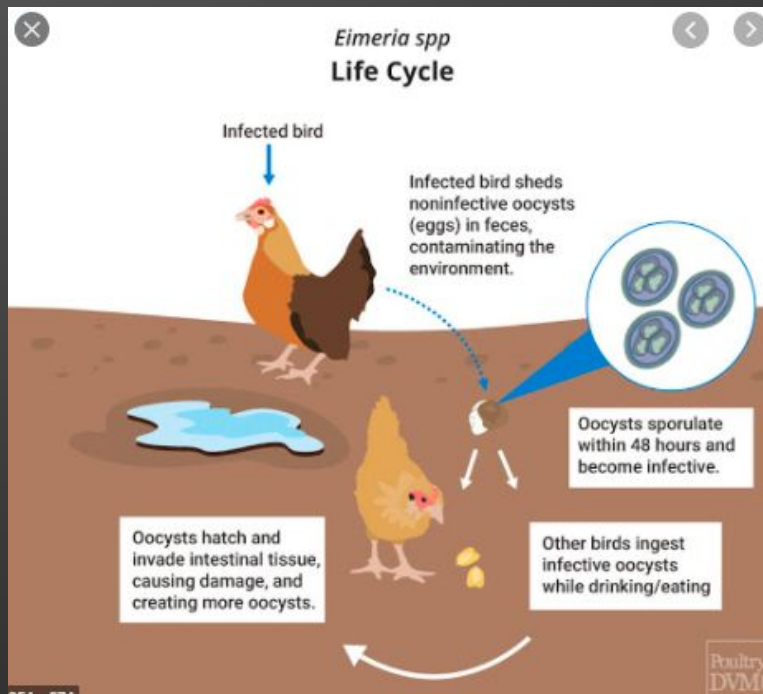
Store in a cool, dry place, below 25°C.
Keep the container tightly closed.

Batch:

Expiry:



Can Coccidia make my chickens ill?



Do I really need to treat my Chickens against Coccidiosis?



Which Coccidia product is best?

Toltrazuril

Baycox

Dr Botha's ToltraPaste-P



Why is Toltrazuril the best

Four reasons!

It is the safest product

It is the most effective product

It is the most cost effective product

It protects for 2 weeks after dosing



Which Coccidia product is also effective against E coli?

Sulpha & Trimethoprim

For use in Show Poultry only. Not for resale

Dr Botha's CoxiColi-P

Compounded Veterinary Product

As an aid in the treatment and prevention of E.coli and Coccidiosis as well as other bacterial infections in Show Poultry



500g

Directions for use

Mix into food or drinking water at a ratio to supply 1 gram of the product per 2kg of chicken weight.

Storage

Store in a cool, dry place, below 25°C.
Keep the container tightly closed.

Batch:

Expiry:



One Day treatment only!



Salmonella - Paratyphoid-Pullorum



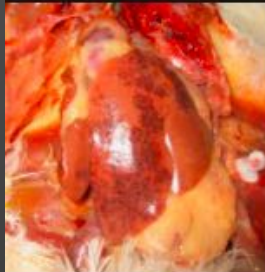
Figure 2 from Pathogenesis...
semanticscholar.org



Paratyphoid Infections in P...
merckvetmanual.com



Pathomicrobial studies on ...
veterinaryworld.org



Common problems in poultr...
www2.biomin.net



Figure 1 from A Review on ...
semanticscholar.org



Pullorum Disease in Poultry...
msdvetmanual.com



Salmonellosis in poultry - V...
viv.net



Pullorum Disease in Poultry...
merckvetmanual.com



Pullorum Disease in Poultry...



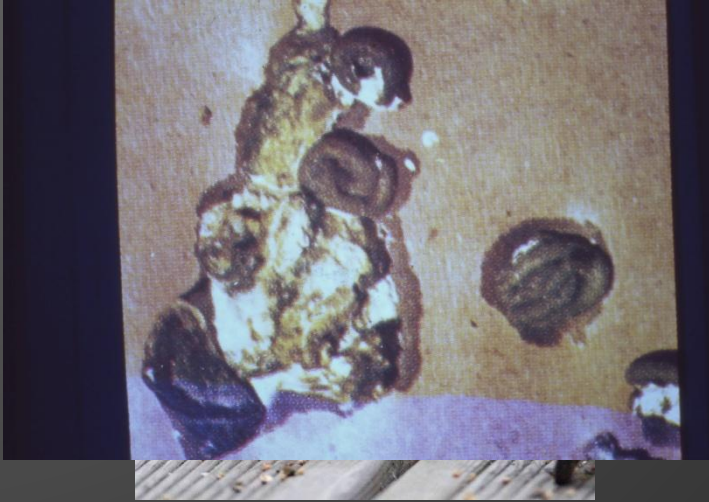
Hepatocare | quality is not ...



Broiler birds affected with s...
researchgate.net



How is Paratyphoid transmitted?

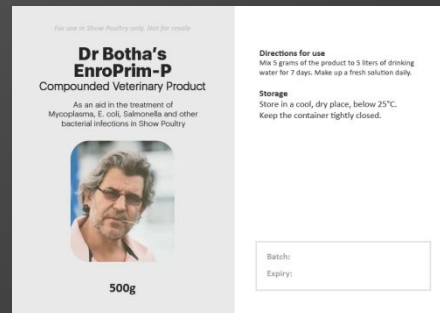


Treatment Salmonella



Effective Salmonella antibiotics

- Enrofloxacin



- Trimethoprim

- Chloramphenicol

- Amoxycillin
- Furaltadone



E. coli - Colibacillosis



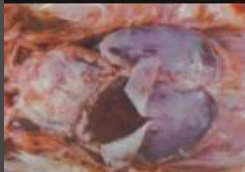
Pathological changes asso...
ajol.info



Colibacillosis | Bacterial Dis...
poultrymed.com



Colibacillosis pptx - د.صلاح - ...
muhadharaty.com



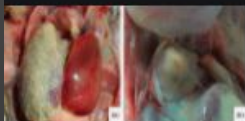
Colibacillosis in poultry: A ...
thetvetmed.com



Top 8 Antibiotics for
E. Coli in poultry



e.coli disease in poultry - Y...
youtube.com



Photographs representative...
researchgate.net



Top 3 Antibiotics for E. Coli...
poultrymania.com



E. coli Infections & Peritonit...
dutchlandfarms.com



Enlarged caecum filled with...
researchgate.net



Abdominal air sacs; thicken...
researchgate.net



File:Colibacilóze polet pind...
commons.wikimedia.org



Necrotic Enteritis

What is the cause

Clostridial intestinal infection



Why does Baytril make it worse



- Kills the good bacteria
- Is not effective against Clostridium



I have treated my chickens with three different antibiotics and they are getting worse Why?



Killing Normal bacteria

Only one antibiotic is effective

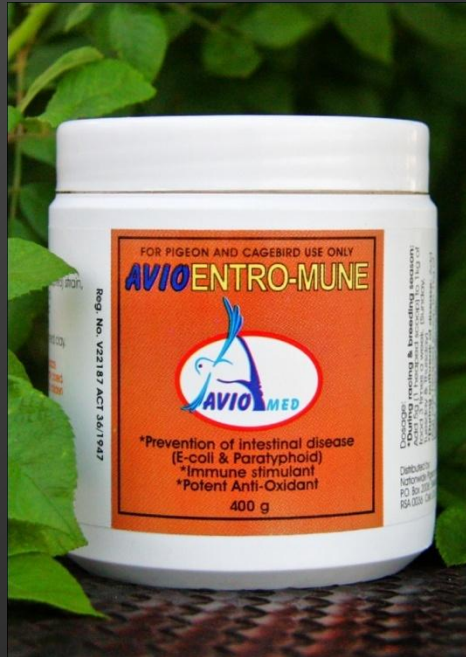
High dose Amoxycillin

What antibiotic is effective

- Pennicillin
- Amoxycillin



Treatment recommended



How must I treat them?

**Combine Three
Products over food for 7 days continuously**



How can I prevent Mycotoxin poisoning ?

- Mycotoxin Binders



Chicken Respiratory syndrome (Coryza)

Respiratory diseases

<u>Ornithosis (One Eye Cold)</u>	13-14
<u>Mycoplasmosis (Slime in the throat)</u>	14-16
<u>Orniplasmosis</u>	16-17



Ornithosis, Mycoplasmosis, Ornithosis



Add Haemophilus - Infectious Coryza



Symptoms Infectious Coryza

Clinical Signs

Facial swelling

Nasal discharge

Conjunctivitis

Eye discharge

Watery eyes

Sneezing

Abnormal breathing sounds

Change in voice

Coughing

Open-mouth breathing

Increased respiratory rate

Swollen wattles

Head shaking

Gurgling sounds

Depression/lethargy

Reduced appetite

Diarrhea

Weight loss

Decreased egg production

Ruffled feathers

Treatment - Chicken respiratory syndrome

- Have to treat with Antibiotic that is effective against Chlamydia Mycoplasma and Haemophilus
- Doxycycline
- Enrofloxacin
- Spiramycin
- Lincomycin & Spectinomycin

Treatment Modalities

- Severe acute Coryza cases

- Treat with LincaSpecta or Mycoban for 7 days
- Valuable birds inject with LincaSpecta

- Chronic Recurrent cases

- Treat for 14 days with DoxyBrom-P and follow up for 7 days with Spiradox

- Coliseptisaemia complicated cases

- Treat with EnroPrim for 7 days
- Follow up with Mycoban for 7 days

- Supportive Treatment

- Probiotics - Entromune
- Gut PH stabilizers Aviogel
- Bromhexine



For use in Show Poultry only. Not for resale

Dr Botha's DoxyBrom-P

Compounded Veterinary Product

As an aid in the treatment and prevention of Chlamydia and Mycoplasma Coryza in Show Poultry



500g

Directions for use

Mix 5 grams of the product to 5 liters of drinking water for 10-20 days. Make up a fresh solution daily. A dark brown to black discoloration of the solution is to be expected during the day.

Storage

Store in a cool, dry place, below 25°C. Keep the container tightly closed.

Batch:

Expiry:

For use in Show Poultry only. Not for resale

Dr Botha's EnroPrim-P

Compounded Veterinary Product

As an aid in the treatment of Mycoplasma, E. coli, Salmonella and other bacterial infections in Show Poultry



500g

Directions for use

Mix 5 grams of the product to 5 liters of drinking water for 7 days. Make up a fresh solution daily.

Storage

Store in a cool, dry place, below 25°C. Keep the container tightly closed.

Batch:

Expiry:



What are the most important factors for raising healthy chicks

- Early and correct vaccination and preventative treatment
- Isolation from other adults
- Prevent overcrowding
- Early exercise and natural sun
- Correct supplementation





Ifaty Sunset
P. Stapelberg. ©

